



流量计
FLOWMETER
智能传感器
SMART SENSOR
加气站核心零部件
CORE PARTS OF REFUELING STATIONS

成都安迪生测量有限公司
Chengdu Andisoon Measure Co.,Ltd.

成都市双流区物联传感科技园
Chengdu Shuangliu District Federation of Things Sensor Science Park

+86-28-6316 5822

+86-28-6316 5817

sales@andisoon.com

www.andisoon.com

成都安迪生测量有限公司
Chengdu Andisoon Measure Co.,Ltd.



01 公司简介
Company Profile

02 资质荣誉
Qualifications Honor

03 流量计类
Flowmeters

12 低温泵类
Cryogenic Pumps

16 枪阀类
Nozzle & valve

26 液氢产品
liquid hydrogen products

31 检定装置
Calibration Device

34 工程案例
Project Cases

40 合作伙伴
Cooperation Partner

43 市场网络
Market Network





公司简介

Company Profile



- 成都安迪生测量有限公司成立于2008年3月，注册资金5000万。公司致力于流量测控相关领域自动化仪表和控制技术的开发、生产、销售及服务，具有雄厚的技术力量和生产能力。拥有大批从事流体测量产品设计和生产的专业技术人才及一批先进的研发、生产测试设备。公司是加拿大Truflow公司授权的生产基地，产品被广泛应用于石油化工、化学、制药、造纸、食品、冶金、环保等多个领域。研发生产的流量计产品远销英国、马来西亚、新加坡、尼日利亚、俄罗斯、泰国、巴基斯坦、乌兹别克斯坦等国。
- 公司已获得ISO9001、ISO14001、ISO45001三体系认证和CE、SIL2、PESO认证，是国家高新技术企业、四川省建设创新型新型企业、成都市企业技术中心、中国测试技术研究院联合实验室、西南石油大学实训基地。公司产品已通过四川省科技成果鉴定，获得“四川市场产品质量稳定合格企业”荣誉证书。

Chengdu Andisoon Measurement Co., Ltd. was founded in March 2008 with a registered capital of 50 million yuan. The company is committed to the development, production, sales and service of automation instruments and control technology in the field of flow measurement and control. It has strong technical force and production capacity. It has a large number of professional technical personnel engaged in the design and production of fluid measurement products and a number of advanced R&D and production testing equipment. The company is the authorized production base of Truflow Canada inc. Its products are widely used in petroleum, chemical, pharmaceutical, paper making, food, metallurgy, environmental protection and many other fields. The flowmeters developed and produced by the company are exported to the United Kingdom, Malaysia, Singapore, Nigeria, Russia, Thailand, Pakistan, Uzbekistan and other countries.

The company has obtained the ISO9001, ISO14001, ISO45001, CE, SIL2, and PESO certifications. It is recognized as a National High-tech Enterprise, Sichuan Province Construction of Innovative Enterprise, Chengdu City Enterprise Technology Center, China NIMTT Joint Laboratory, and Southwest Petroleum University Internship Base. The company's products have been approved by the Sichuan Science and Technology Bureau as a technological achievement and have obtained the "Sichuan Market Product Quality Stable Qualified Enterprise" honorary certificate.



资质荣誉

Qualifications Honor





科里奥利质量流量计

Coriolis Mass Flowmete

技术参数 / Technical Parameters



准确度等级 Accuracy	0.1% (可选)、0.15%、0.2%、0.5% (默认)
重复性 Repeatability	0.05% (可选)、0.075%、0.1%、0.25% (默认)
密度测量精度 Accuracy of density measurement	$\pm 0.001\text{g/cm}^3$
测量密度范围 Measure density range	$(0.08\sim 2000)\text{kg/m}^3$
温度测量精度 Range of media for density measurement	$\pm 1^\circ\text{C}$
测量温度范围 Measuring temperature range	$-196\sim 350^\circ\text{C}$
接液材料 Answer the liquid material	304、316L、(可定制哈氏合金、蒙乃尔合金、钛、钽、锆等) 304, 316L, (Hastelloy, Monel, Titanium, Tantalum, Zirconium, etc. can be customized)
测量介质 Measuring medium	气体、液体、多相流 Gas, Liquid and Multi-phase flow

产品介绍 / Product Introduction

科里奥利质量流量计可以直接测量通过流量计介质的质量流量、密度和温度。由于流量计是以数字信号处理为核心的智能仪表，因此可根据上述三个基本量而导出十几种参数供用户使用。科里奥利质量流量计是组态灵活，功能强大，性价比高的新一代高精度流量仪表。

Coriolis mass flowmeter can directly measure the mass flow-rate, density and temperature of the flowing medium. The flowmeter is an intelligent meter with digital signal processing as the core, thus a dozen of parameters can be outputted for user according to the three fundamental quantities above. Featured with flexible configuration, strong function and high cost performance, the Coriolis Mass Flowmeter is a new generation of high-precision flow meter. Coriolis Mass Flowmeter is a new generation of high-precision flow meter, which is flexible configuration, powerful function and high cost performance.

产品特点 / Product Features

- A. 通过ATEX、IECEX以及CCS认证; A. We Flowmeter has passed ATEX IECEX and CCS certificate.
- B. 不受温度、压力、流速等影响; B. Not affected by temperature, pressure, flow rate, etc.
- C. 准确度高、重复性好; C. High accuracy, good repeatability.
- D. 通过高压、高温、深冷标定。 D. Through high pressure, hightemperature, and cryogenic calibration



产品特点 / Product Features

- A. 准确度高，重复性好
- B. 零点稳定性好，长期工作稳定
- C. 专注高压和低温应用，最低零下253℃

- A. Measurement precision, good repeatability
- B. Zero point stability is good, long-term work is stable
- C. Focus on high pressure & low temperature application, the lowest is -253℃.

技术参数 / Technical Parameters

型号 Model	AMF003A	AMF006A	AMF006AH	AMF008A	AMF025A	AMF050A	AMF080A	AMF150A	AMF200A	AMF250D	AMF300D
测量介质 Measuring medium	液体、气体 Liquid, Gas										
介质温度范围 Medium temp. range	-253℃~+300℃										
口径 Nominal diameter	DN3	DN6		DN8	DN25	DN50	DN80	DN150	DN200	DN250	DN300
最大流量 Max. Flow-rate	4kg/min	20kg/min	7.2kg/min	25 kg/min	80 kg/min	50 t/h	108 t/h	800t/h	1200t/h	1400t/h	2000t/h
工作压力范围 (可定制) Working Pressure range(Customizable)	≤10MPa	≤6.3MPa	≤43.8MPa / ≤100MPa	≤4 MPa			≤10 MPa				
连接方式 (可定制) Connection Mode (Customizable)	G1/4 内螺纹 Internal Thread	G1/2 内螺纹 Internal Thread	UNF 13/16-16 内螺纹 Internal thread	HG/T20592 法兰 DN15 PN40(RF)	HG/T20592 法兰 DN25 PN40(RF)	HG/T20592 法兰 DN50 PN100(RF)	HG/T20592 法兰 DN80 PN100(RF)	HG/T20592 法兰 DN150 PN100(RF)	HG/T20592 法兰 DN200 PN100(RF)	HG/T20592 法兰 DN250 PN100(RF)	HG/T20592 法兰 DN300 PN100(RF)
安全与防护 Safety and Protection	Ex ib IIC T1...T6 Gb(传感器) [Ex ib Gb] IIC(CN2000变送器)		Ex db IIC T1...T6 Gb IP67	Ex db IIC T1...T6 Gb IP67 CCS							



产品特点 / Product Features

- A. 结构紧凑，安装方便
- B. 压力损失小，适应工况广
- C. 高安全性，自动泄压设计

- A. Compact structure, easy installation
- B. Low pressure loss and wide adaptability to working conditions
- C. Very security, automatic pressure relief design

技术参数 / Technical Parameters

型号 Model	AMF015S	AMF020S	AMF025S	AMF040S	AMF050S	AMF080S	AMF100S
测量介质 Measuring medium	液体、气体 Liquid、Gas						
介质温度范围 Medium temp.range	-40℃~350℃						
口径 Nominal diameter	DN15	DN20	DN25	DN40	DN50	DN80	DN100
最大流量 Max.Flow-rate	30kg/min	70kg/min	200kg/min	30 t/h	50 t/h	108 t/h	250t/h
工作压力范围 (可定制) Working Pressure range (Customizable)	≤25MPa	≤25MPa	≤4MPa				
连接方式 (可定制) Connection Mode (Customizable)	G $\frac{3}{4}$ (内螺纹 Internal thread)	G1(内螺纹 Internal thread)	HG/T20592 法兰 Flange DN25 PN40 (RF)	HG/T20592 法兰 Flange DN40 PN40 (RF)	HG/T20592 法兰 Flange DN40 PN40 (RF)	HG/T20592 法兰 Flange DN40 PN40 (RF)	HG/T20592 法兰 Flange DN100 PN40(RF)
安全与防护 Safety and Protection	Ex db ib IIC T1~T6 Gb IP67						

长喉颈文丘里气液两相流量计

Long-neck Venturi Gas/Liquid Two-phase Flowmeter



HHTPF-LV

产品介绍 / Product Introduction

长喉颈文丘里气液两相流量计基于理论分析和计算流体力学CFD数值模拟技术，优化设计了长喉颈文丘里管作为节流元件。采用独创的双差压比值法含率测量技术，适用于中低含液率天然气井口气液两相流测量。

The long-neck Venturi gas/liquid two-phase flowmeter is optimized and designed with a long-neck Venturi tube as its throttling element based on theoretical analysis and CFD numerical simulation techniques for computational fluid dynamics. The original double-differential pressure ratio method holdup measurement technology is applied, which is applicable to the measurement of gas/liquid two-phase flow at gas wellhead with a medium-low liquid content.

产品特点 / Product Features

- A. 专利技术：独创的双差压比值法含率测量技术；
- B. 非分离计量：天然气井口气液两相混输流量测量，无需分离器；
- C. 无放射性：无伽马射线源，安全环保；
- D. 应用范围广：适用于常规气田、页岩气田、致密砂岩气田、煤层气田等。

- A. Patented technology: original double-differential pressure ratio method holdup measurement technology.
- B. Unseparated metering: gas wellhead gas/liquid two-phase mixed transmission flow measurement, without separator required.
- C. No radioactivity: no gamma-ray source, safe and environment friendly.
- D. Wide application range: applicable to conventional gas fields, shale gas fields, tight sandstone gas fields, coalbed methane fields, etc.

技术参数 / Technical Parameters

型号 Model	HHTPF-LV
气相测量精度 Gas phase measurement accuracy	± 5%
液相测量精度 Accuracy of liquid phase measurement	± 10%
含液率流量范围 (LVF) Liquid rate flow range	0~10%
口径 Nominal diameter	DN50、DN80
设计压力 Design pressure	6.3MPa、10MPa、16MPa
材质 Material	304、316L、硬质合金、镍基合金、2205双相不锈钢 304、316L、Hard alloy, nickel-base alloy、2205

新月孔板气液两相流量计

Crescent Orifice Plate Gas/Liquid Two-phase Flowmeter



HHTPF-CP

产品介绍 / Product Introduction

新月孔板气液两相流量计针对工况条件下处于分层流的气液两相流动状态，创造性地采用非轴对称的新月孔板节流元件，结合独创的双差压比值法含率测量技术，适用于中高含液率天然气井口气液两相流测量。

The crescent orifice plate gas/liquid two-phase flowmeter, based on the gas/liquid two-phase flow state in stratified flow state under working conditions, creatively adopts non-axisymmetric crescent orifice plate throttling element and original double-differential pressure ratio method holdup measurement technology, which is applicable to gas/liquid two-phase flow measurement at gas wellhead with a medium-high liquid content.

产品特点 / Product Features

- A. 专利技术：国际首创非轴对称节流原件测量气液两相流；
- B. 非分离计量：天然气井口气液两相混输流量测量，无需分离器；
- C. 无放射性：无伽马射线源，安全环保；
- D. 流型适应性强：非轴对称节流原件设计，特别适应于分层流、波状流、段塞流等多种中高含液率流动形态。

- A. Patented technology: measurement of gas/liquid two-phase flow by internationally pioneered non-axisymmetric throttling element.
- B. Unseparated metering: gas wellhead gas/liquid two-phase mixed transmission flow measurement, without separator required.
- C. No radioactivity: no gamma-ray source, safe and environment friendly.
- D. Strong flow pattern adaptability: designed with a non-axisymmetric throttling element, especially suitable for stratified flow, wave flow, slug flow and other flow patterns with a medium-high liquid content.

技术参数 / Technical Parameters

型号 Model	HHTPF-CP
气相测量精度 Gas phase measurement accuracy	± 5%
液相测量精度 Accuracy of liquid phase measurement	± 10%
含液率流量范围 (LVF) Liquid rate flow range	0~15%
口径 Nominal diameter	DN50、DN80
设计压力 Design pressure	6.3MPa、10MPa、16MPa
材质 Material	304、316L、硬质合金、镍基合金、2205双相不锈钢 304、316L、Hard alloy, nickel-base alloy、2205

微波喷嘴气液两相流量计 Microwave Nozzle Gas/Liquid Two-phase Flowmeter



HHTPF-NZ

产品介绍 / Product Introduction

微波喷嘴气液两相流量计将微波技术与喷嘴节流装置有机结合，利用喷嘴节流装置测量气液两相总流量，微波技术测量液相含率，适用于含液率范围0-100%的天然气井口气液两相流测量。具有自主知识产权，核心部件国产化，质量稳定，可靠性好。

The microwave nozzle gas/liquid two-phase flowmeter organically combines microwave technology with nozzle throttling device and is able to measure the total flow rate of gas and liquid phases by the nozzle throttling device and measure the liquid content based on microwave technology. It is applicable to the gas/liquid two-phase measurement at gas wellhead with a liquid content ranging from 0-100%. It has independent intellectual property rights, with its core components domestically produced, which makes the quality stable and the reliability excellent.

产品特点 / Product Features

- A. 专利技术：国际首创非轴对称节流原件测量气液两相流；
- B. 非分离计量：天然气井口气液两相混输流量测量，无需分离器；
- C. 无放射性：无伽马射线源，安全环保；
- D. 流型适应性强：适用于含液率范围0-100%的工况条件。

- A. Patented technology: measurement of gas/liquid two-phase flow by internationally pioneered non-axisymmetric throttling element
- B. Unseparated metering: gas wellhead gas/liquid two-phase mixed transmission flow measurement, without separator required
- C. No radioactivity: no gamma-ray source, safe and environment friendly
- D. Strong adaptability: suitable for the working conditions with liquid content ranging from 0-100%

技术参数 / Technical Parameters

型号 Model	HHTPF-NZ
气相测量精度 Gas phase measurement accuracy	± 10%
液相测量精度 Accuracy of liquid phase measurement	± 10%
含液率流量范围 (LVF) Liquid rate flow range	0-10%
口径 Nominal diameter	DN50、DN80
设计压力 Design pressure	6.3MPa、10MPa、16MPa
材质 Material	304、316L、硬质合金、镍基合金、2205双相不锈钢 304、316L、Hard alloy, nickel-base alloy、2205

低温泵类 Cryogenic Pumps

低温浸没式离心泵 Cryogenic Submerged Centrifugal Pump-Immersed Type



LFP4-280-5.5



LFP20-280-15



LFP25-465-22



LFP30-280-22



LFP40-280-25



LFP60-280-37



ADSP20-280-15



ADSP25-465-22



ADSP30-280-22

产品介绍 / Product Introduction

根据离心泵原理，液体经泵加压后输送到管路，实现给汽车加油或从槽车抽到储罐的过程。

Based on the Principle of centrifugal pump, liquid will be delivered to pipeline after being pressurized to realize refuel liquid for vehicle or pump liquid from tank wagon to storage tank.

产品特点 / Product Features

- A. 泵体和电机完全浸没在介质中，可持续对泵机组进行降温；
- B. 立式结构设计使泵运行更稳定，寿命更长；
- C. 电机采用变频技术设计；
- D. 自平衡设计使整泵运转时自动平衡径向力及轴向力，提高轴承使用寿命。

- A. Pump and motor are completely immersed in medium, which can continuously cool the pump.
- B. The pump is vertical structure, which makes it operate more steadily with long service life.
- C. The motor is designed based on inverter technologies.
- D. Self-balancing design is applied, which makes radial force and axial force automatically balanced during operation of whole pump and extends service life of bearings.

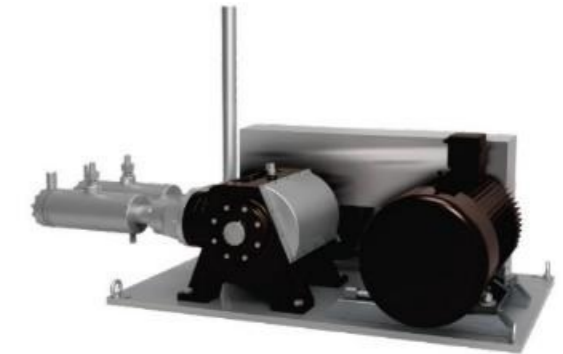
技术参数 / Technical Parameters

型号 Model	额定流量 Rated Flow (m ³ /h)	额定扬程 Rated Head (m)	最大流量 Maximum Flow (mL/h)	最大扬程 Maximum Head (m)	必需汽蚀余量 NPSHr (m)	叶轮级数 Impeller stage	额定功率 Power Rating (kW)	电源电压 Power Supply	相位 Phase	电机转速 Motor Speed (r/min)
LFP4-280-5.5	4	280	8	336	0.9	4级	5.5	380V/85Hz	3	1800~5100 (变频) (Frequency conversion)
LFP20-280-15	20	280	25	336	0.9	4级	15	380V/85Hz	3	1800~5100 (变频) (Frequency conversion)
LFP25-465-22	25	465	30	500	0.9	4级	22	380V/100Hz	3	1800~6000 (变频) (Frequency conversion)
LFP30-280-22	30	280	40	336	0.9	2级	22	380V/85Hz	3	1800~5100 (变频) (Frequency conversion)
LFP40-280-25	40	280	60	336	0.9	4级	25	380V/85Hz	3	1800~5100 (变频) (Frequency conversion)
LFP60-280-37	60	280	90	336	0.9	2级	37	380V/85Hz	3	1800~5100 (变频) (Frequency conversion)
ADSP20-280-15	20	280	25	336	0.9	4级	15	380V/85Hz	3	1800~5100 (变频) (Frequency conversion)
ADSP25-465-22	25	465	30	500	0.9	4级	22	380V/100Hz	3	1800~6000 (变频) (Frequency conversion)
ADSP30-280-22	30	280	40	336	0.9	2级	22	380V/85Hz	3	1800~5100 (变频) (Frequency conversion)

低温往复泵 Cryogenic Reciprocating Pump



LPP1500-250(卧式单列)
Horizontal Single-row Type



LPP3000-250(卧式双列)
Horizontal Double-row Type

产品介绍 / Product Introduction

L-CNG天然气加气站高压气瓶的充装，主要应用于低温高压增压系统，使介质获得较高压力后进行使用。

It can be used to fill high-pressure gas cylinder of L-CNG filling station, It is applicable to cryogenic high-pressure pressurization system to pressurize medium for use.

产品特点 / Product Features

- A. 泵活塞环和密封圈采用特制低温材料制作，具有使用寿命长特点；
- B. 活塞杆、缸套表面采用特殊工艺加工，提高密封面表面硬度20%，增加了密封件使用寿命；
- C. 泵冷端部件具有泄漏检测装置，保证使用安全性、可靠性；
- D. 连杆和偏心轮采用滚动摩擦，有效解决传动端抱死的问题；
- E. 传动箱具有油温检测联机报警装置，确保润滑安全。

- A. Pump piston ring and sealing ring made of low temperature filled with special material, with long service life characteristics.
- B. The surface of the piston rod and cylinder sleeve are processed by special process to improve the surface hardness of the sealing surface by 20% and increase the service life of the seal.
- C. Pump cold end part is provided with leak detection device to ensure the use of security and reliability.
- D. Apply rolling friction for Connecting rod and Eccentric wheel, effectively solve the problem that the transmission side disable to drive.
- E. Transmission box is provided with the oil temperature detection online alarm device, to ensure the safety of lubrication.

技术参数 / Technical Parameters

型号 Model	LPP1500-250	LPP3000-250
介质温度 Medium temp.	-196℃~-82℃	-196℃~-82℃
活塞直径/行程 Piston diameter/stroke	50/35mm	50/35mm
转速 Speed	416 r/min	416 r/min
传动比 Drive ratio	3.5:1	3.5:1
排量 Flow	1500 L/h	3000 L/h
吸入压力 Suction pressure	0.2~12 bar	0.2~12 bar
最大工作压力 Max. Working Pressure	250 bar	250 bar
功率 Power	30 kW	55 kW
电源电压 Power supply	380V/50 Hz	380V/50 Hz
相位 Phase	3	3
缸列数 Amount of cylinders	1	2



枪阀类 Nozzle & valve

LNG系列



加气枪&枪座 Gas Refueling Nozzle & Receptacle



ALGC25G



T605-B



ALGC25-C



T602

产品介绍 / Product Introduction

LNG加液枪是低温介质输送过程中的专用充装设备，用于与车载加注口的快速安全连接，输送低温介质。

The LNG liquid refueling nozzle is a special filling device used in the delivery of cryogenic media, which is used for fast and safe connection with the vehicle fill port for delivering cryogenic media.

产品特点 / Product Features

- A. 强制开爪的三爪设计，避免弹簧冻死、有效减轻重量；
- B. 内枪管定位，提升枪体稳定性及可靠性；
- C. 加装安全锁机构，提升安全性能；
- D. 无拉杆结构，易于安装和维护；
- E. 高性能蓄能密封圈，避免加注时泄漏。

- A. Three-jaw design (jaws can be opened forcibly), which can avoid spring freezing and effectively reduce the weight;
- B. Internal nozzle locating, improving the stability and reliability of the refueling nozzle body;
- C. Provided with a safety locking mechanism, improving safety performance;
- D. No tie bar structure, facilitating installation and maintenance;
- E. High-performance energy storage seal ring, avoiding leakage during filling.

技术参数 / Technical Parameters

名称 Name	型号 Model	最大加注压力 Max. fueling pressure	最大工作压力 Max. Working Pressure	加注流量 Fueling Flow	密封形式 Type of Seal	接口尺寸 Interface Size	主体材质 Main Body Material
加气枪 Refueling Nozzle	ALGC25G	1.6 MPa	3.5 MPa	190 L/min	弹簧蓄能密封圈 Spring energy storage sealing	M36 × 2	304 不锈钢、铝合金 stainless steel, aluminium alloy
加气枪 Refueling Nozzle	T605-B/ ALGC25-C	1.6 MPa	3.5 MPa	190 L/min	弹簧蓄能密封圈 Spring energy storage sealing	M36 × 2	304 不锈钢、超硬铝 stainless steel, ultralumin
加气枪座 Receptacle	T602	1.6 MPa	3.5 MPa	190 L/min	弹簧蓄能密封圈 Spring energy storage sealing	M42 × 2	304 不锈钢 304 stainless steel

拉断阀 Breakaway Coupling



T102



T105

产品介绍 / Product Introduction

拉断阀安装于LNG加气设备上，当受到预设的拉力时能自动断开，两端自动密封，保护加气设备的安全。

Installed on the LNG refilling equipment, the breakaway coupling can automatically disconnect when subjected to the preset tension, and both ends are automatically sealed to protect the safety of the gas refilling equipment.

产品特点 / Product Features

- A. 拉断阀结构简单、流道顺畅，同口径流量更大；
- B. 快速脱离、自动密封、安全可靠；
- C. 拉断力稳定，拉断后仅更换拉断体即可重复使用，维护成本低；

- A. The breakaway coupling has a simple structure and an unblocked flow channel, making the flow larger by comparing with others with the same caliber;
- B. It can break away quickly and automatically sealed, which is safe and reliable;
- C. It has a stable breaking load and can be reused by replacing the breaking parts after breaking, achieving a low maintenance cost;

技术参数 / Technical Parameters

型号 Model	工作压力 Working pressure	拉断力 Break-away force	公称通径 DN	接口尺寸(可定制) Port size (customizable)	主体材质/密封材质 Main material /sealing material	防爆标志 Explosive-proof mark
T102	≤1.6 MPa	400N~600N	DN12	7/8-14 UNF (出) (Outlet) (进: 内螺纹; 出: 外螺纹) (Inlet: Internal thread Outlet: External thread)	304 不锈钢/紫铜 304 stainless steel/Copper	Ex c IIB T4 Gb
T105	≤1.6 MPa	400N~600N	DN25	NPT 1(进) (Inlet); 1 1/2-12 UNF (出) (Outlet)	304 不锈钢/紫铜 304 stainless steel/Copper	Ex c IIB T4 Gb

拉断阀 Breakaway coupling



T108

产品介绍 / Product Introduction

A. 拉断阀用于LNG槽车装卸车场景。安装于管束车和装卸设备之间，保护装卸设备在受到异常拉力时的安全性。

A. Breakaway coupling is used for loading and unloading of LNG tanker. Installed between the tube bundle truck and the handling equipment, it is to protect the safety of the handling equipment when subjected to abnormal tension.

产品特点 / Product Features

- A. 当承受异常的外力时会自动断开而不产生泄漏；
- B. 防止因人为操作失误造成火灾、爆炸等安全事故的发生。

A. It will automatically disconnect without leakage in case of abnormal external force;
B. It is able to prevent fire, explosion and other safety accidents caused by human errors.

技术参数 / Technical Parameters

型号 Model	工作压力 Working pressure	拉断力 Break-away force	公称通径 DN	接口尺寸(可定制) Port size (customizable)	主体材质 Main material	防爆标志 Explosive-proof mark
T108	1.6MPa	见产品外形尺寸图 The overall dimension drawing should be attached.		304 不锈钢	Ex c IIB T4 Gb	

产品外形尺寸图 / The overall dimension drawing should be attached.

型号 Model	公称通径 DN	拉断力 Break-away Force (kN)	尺寸 A Size A (mm)	尺寸 B Size B (mm)	尺寸 C Size C (mm)	尺寸 D Size D (mm)
T108-25	DN25	4.6 ± 1	110	φ 115	φ 85	4-φ 14
T108-32	DN32	6 ± 1	120	φ 140	φ 100	4-φ 18
T108-40	DN40	8.5 ± 1	135	φ 150	φ 110	4-φ 18
T108-50	DN50	13 ± 2	165	φ 165	φ 125	4-φ 18
T108-65	DN65	22 ± 3	175	φ 185	φ 145	8-φ 18
T108-80	DN80	33 ± 5	195	φ 200	φ 160	8-φ 18
T108-100	DN100	52 ± 5	230	φ 235	φ 190	8-φ 22

回气枪&回气枪座 Gas Return Nozzle&Gas Return receptacle



T703



T702

产品介绍 / Product Introduction

LNG回气枪用于与车载接口快速连接，输送LNG加注过程中产生的气态天然气回到加液机。

The LNG return nozzle is used to quickly connect with the vehicle connection port, for the delivery of the gaseous natural gas generated during LNG filling back to the liquid adding device.

产品特点 / Product Features

- A. 回气枪采用高性能蓄能密封技术，确保回气无泄漏；
- B. 通过旋转手柄快速连接即可进行回气，适用于反复连接；
- C. 操作过程中回气软管不随手柄转动，有效避免回气软管的扭转和损坏。

- A. The gas return nozzle adopts high-performance energy storage seal technology to avoid leakage during gas return;
- B. Gas can be returned via fast connection by rotating handle, which is applicable to repeated connection;
- C. The gas return hose does not rotate with the handle during operation, effectively avoiding torsion and damage to the gas return hose.

技术参数 / Technical Parameters

型号 Model	额定工作压力: Rated working pressure	额定流量 Rated flow	公称通径 DN	接口尺寸 Port size	主体材质 Main Body Material
T703	1.6 MPa	60 L/min	DN8	M22×1.5	304 不锈钢 304 stainless steel
T702	1.6 MPa	60 L/min	DN8	M22×1.5	304 不锈钢 304 stainless steel

CNG系列

拉断阀 Breakaway Coupling



T101



T103

产品介绍 / Product Introduction

拉断阀安装于CNG加气设备上，当受到预设的拉力时能自动断开，两端自动密封，保护加气设备的安全。

Installed on the CNG refilling equipment, the breakaway coupling can automatically disconnect when subjected to the preset tension, and both ends are automatically sealed to protect the safety of the gas refilling equipment.

产品特点 / Product Features

- A. 拉断阀拉脱后重新装配即可重复使用，维护成本低；
- B. 能快速脱离、自动密封、安全可靠。

- A. The break-away coupling can be repeatedly used by re-assembly after pull-off, this means its maintenance cost low;
- B. Rapid pull-off, Automatic seal, Safe and reliable.

技术参数 / Technical Parameters

型号 Model	最大工作压力: Max working Pressure	拉断力 Break-away force	公称通径 DN	接口尺寸(可定制) Port size (customizable)	材质 Material	防爆标志 Explosive-proof mark
T101	25MPa	400N~600N	DN8	G3/8" 内螺纹 (进端和出端) G3/8" Internal thread	不锈钢 (Stainless steel)、PCTFE	Ex c II B T4 Gb
T103	25MPa	600N~900N	DN20	NPT 1" 内螺纹 (进端和出端) NPT 1" Internal thread	不锈钢 (Stainless steel)、PCTFE	Ex c II B T4 Gb

电磁阀 Solenoid Valve



T502



T504

产品介绍 / Product Introduction

高压防爆电磁阀安装于高压气态管路上，实现管路开启和关闭功能的自动化控制。

The high pressure explosion-proof solenoid valve is installed in the high pressure gas pipeline to realize the automatic control of the opening and closing function of the pipeline.

产品特点 / Product Features

- A. 电磁阀实现自动控制加气过程，安全可靠；
- B. 更适应国内介质含水、含油较多的复杂工况，性能稳定。
- A. The solenoid valve can control gas filling process automatically, safety and reliably;
- B. Better suitable for complicated working conditions of domestic mediums, which contain more oil and water. Stable performance.

技术参数 / Technical Parameters

型号 Model	最大工作压力: Max working pressure	公称通径 DN	环境温度: Ambient temp.	接口尺寸 (可定制) Port size (customizable)	防爆标志 Explosive-proof mark
T502	25MPa	DN10	-40℃ ~ +55℃	G3/8"	Ex mb II T4 Gb
T504	25MPa	DN20	-40℃ ~ +55℃	G1"	Ex mb II T4 Gb

高压二位三通阀 High Pressure Two-position Three-way Valve



T203

产品介绍 / Product Introduction

二位三通阀用于CNG等高压气体加注场景，通过转动开关手柄能实现气体的加注和泄放功能。

The two position three-way valve is used in filling high-pressure gas such as CNG, and gas refilling and discharging can be realized by turning the switch handle.

产品特点 / Product Features

- A. 切换迅速，操作简单，方便；
- B. 更适应国内介质含水、含油较多的复杂工况，性能稳定。
- A. Quick switching and simple and convenient operation;
- B. Especially suitable for domestic complex working conditions with a high water and oil content, which is stable in performance.

技术参数 / Technical Parameters

型号 Model	最大工作压力: Max working pressure	强度试验压力 Pressure of strength test	公称通径 DN	接口尺寸 Port size	材质 Material
T203	25MPa	37.5MPa	DN5	NPT1/4"	316L 不锈钢 316L stainless steel

H₂ 系列

加氢枪 Hydrogen Refueling Nozzle



T631-B



T633-B



T635

产品介绍 / Product Introduction

加氢枪用于车辆加注高压氢气场景，能与加氢口快速安全连接，输送高压氢气。

The hydrogen refueling nozzle is used in filling vehicles with high-pressure hydrogen, and can be connected with the hydrogen refueling port quickly and safely to deliver high-pressure hydrogen.

产品特点 / Product Features

- A. 加氢枪采用专利密封结构；
 - B. IIC类防爆等级；
 - C. 采用高强度抗氢脆不锈钢。
- A. Patented seal structure is adopted for the hydrogen refueling nozzle.
B. Anti-explosion grade: IIC.
C. It is made of high-strength anti-hydrogen-embrittlement stainless steel.

技术参数 / Technical Parameters

型号 Mode	T631-B	T633-B	T635
工作介质 Working medium	H ₂ , N ₂		
环境温度 Ambient Temp.	-40℃ ~ +60℃		
额定工作压力 Rated working pressure	35MPa		70MPa
公称口径 Nominal diameter	DN8	DN12	DN4
进气口尺寸 Air inlet size	9/16" -18 UNF	7/8" -14 UNF	9/16"-18 UNF
排气口尺寸 Air outlet size	7/16" -20 UNF	9/16" -18 UNF	-
通讯线接口 Communication line interface	-	-	兼容 SAE J2799/ISO 8583 等协议 Compatible with SAE J2799/ISO 8583 and other protocols
主体材料 Main materials	316L	316L	316L 不锈钢 316L Stainless Steel
产品重量 Product weight	4.2kg	4.9kg	4.3kg

加氢拉断阀 Breakaway Coupling for Hydrogen



T135-C



T136-C/T137-C



T138

产品介绍 / Product Introduction

拉断阀安装于氢气加气设备上，当受到预设的拉力时能自动断开，两端自动密封，保护加气设备的安全。

Installed on the hydrogen refueling equipment, the breakaway coupling can automatically disconnect when subjected to the preset tension, and both ends are automatically sealed to protect the safety of the gas refilling equipment.

产品特点 / Product Features

- A. 加氢拉断阀快速密封、安全可靠；
 - B. 拉脱后重新装配即可继续使用，维护成本低。
- A. The hydrogen refueling breakaway coupling can seal quickly, which is safe and reliable;
B. It can be still used after reassembled once being broken away, making the maintenance cost low;

技术参数 / Technical Parameters

型号 Mode	T135-C	T136-C	T137-C	T138
工作介质 Working medium	H ₂			
环境温度 Ambient Temp.	-40℃ ~ +60℃			
最大工作压力 Max working pressure	43.8MPa			87.5MPa
公称口径 Nominal diameter	DN12	DN8	DN12	DN4
接口尺寸: Port size	NPS 1" -11.5 LH	进气端: 9/16 管 CT 螺纹连接 回气端: 3/8 管 CT 螺纹连接		进气端: 3/8 管 CT 螺纹; 出气端: 9/16-18 UNF
主体材料 Main materials	316L 不锈钢 (Stainless steel)			
拉断力 Breaking force	600N ~ 900N	400N ~ 600N		

气动柱塞阀 Pneumatic plunger valve



产品介绍 / Product Introduction

T33系列气动柱塞阀是应用于高压氢气管路的开关阀，安装在加氢机或顺序控制盘内的高压管路上，利用仪表风气体来控制管路的开启和关闭，从而打开或关闭管路，实现对加气过程的自动化控制。

T33 series pneumatic plunger valve is an on-off valve used in high-pressure hydrogen pipeline. The product is installed on the high-pressure pipeline in the hydrogenation machine or sequence control panel, and the instrument air is used to control the opening and closing of the pipeline, so as to open or close the pipeline and realize the automatic control of the gas filling process.

技术参数 / Technical Parameters

型号 Model	工作介质 Medium	环境温度 Ambient temp.	最大工作压力 Max. working pressure	公称通径 DN	驱动气源压力 Drive Gas pressure	主体材料 Body material
T331	H2	-40℃~+60℃	87.5MPa	DN8	0.4~0.8MPa	316L
T332			45MPa	DN12		

产品特点 / Product Features

- A. 产品结构紧凑，能节省安装空间；
 - B. 已完成10万次寿命试验，性能可靠；
 - C. 具备阀位显示功能；
 - D. 可靠密封寿命远高于球阀。
- A. Product structure is compact, which can save installation space.
 B. The product has completed 100,000-cycle life tests, and the performance is reliable.
 C. The valve has a valve position display function.
 D. The reliable sealing life is far longer than that of ball valves.

液氢产品 liquid hydrogen products

液氢枪 LH2 refueling nozzle



产品介绍 / Product Introduction

液氢加注枪是用于与液氢加注口连接的，进行安全输送液氢的专用快速连接器。液氢枪与液氢加注口的连接后，两个产品内置的单向阀芯相互顶开，从而打开加注通路。加注完成后，液氢枪与液氢加注口的单向阀芯在弹簧力和介质压力的作用下分别复位，确保各自处于密封状态完成整个作业流程。

LH2 refueling nozzles are dedicated quick connectors used to connect to LH2 receptacles for the safe transport of liquid hydrogen. When an LH2 refueling nozzle is connected to an LH2 receptacle, the one-way valves built into the two products open the filling path by pushing each other apart. After filling is complete, the one-way valves in the LH2 refueling nozzle and LH2 receptacle return to their original positions under the action of spring force and medium pressure, ensuring that each is in a sealed state to complete the entire operation process.

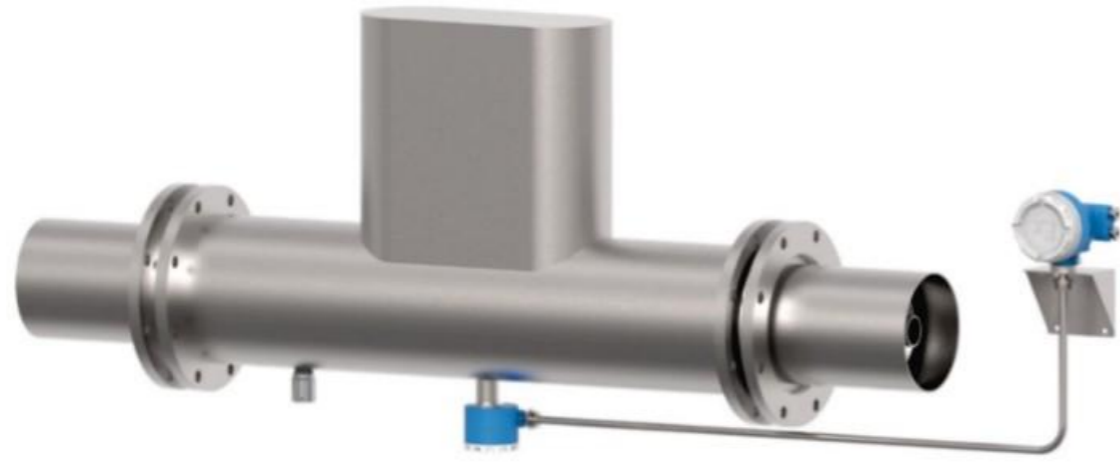
技术参数 / Technical Parameters

型号 Model	介质 medium	介质温度 Medium Temp.	接口尺寸 Port Size	密封型式 Type of Seal
T639	LH2	-253℃	DN20 真空法兰	弹簧蓄能密封圈 Spring energy storage seal ring

产品特点 / Product Features

- A. 采用真空绝热技术，降低介质升温速度；
 - B. 引入氢气吹扫功能，提升充装安全性；
 - C. 联动性设计，操作逻辑更符合操作习惯。
- A. Adopt vacuum insulation technology to reduce the temperature rise rate of the medium.
 B. Introduce hydrogen blow-through function to improve the safety of filling.
 C. Interlocking design makes the operation logic more in line with operating habits.

液氢流量计 LH2 mass flowmeter



产品介绍 / Product Introduction

科里奥利质量流量计是以数字信号处理为核心的智能仪表，直接测量通过流量计介质的质量流量、密度和温度。实现质量流量、体积流量、密度和温度测量。

Coriolis mass flowmeter is an intelligent instrument with digital signal processing as its core. It directly measures the mass flow, density and temperature of the medium passing through the flowmeter. The measurement of mass flow, volume flow, density and temperature is realized.

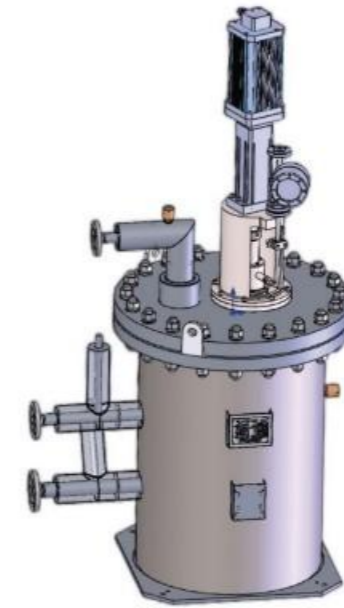
产品特点 / Product Features

- A. 采用真空绝热技术，降低介质温升速度；
 - B. 连接方式为真空法兰；
 - C. 针对液氢介质进行算法优化。
- A. Adopt vacuum insulation technology to reduce the temperature rise rate of the medium.
B. The connection method is vacuum flange.
C. The algorithm is optimized for liquid hydrogen medium.

技术参数 / Technical Parameters

序号 SN	名称 Name	参数 Date
1	流量范围 Flow range	(1.5~15) kg/min
2	最大工作压力 Max working pressure	4MPa
3	接液材料 material	316L
4	准确度等级 Accuracy level	0.5 级
5	介质温度 Medium temp	-252.78℃
6	结构形式 Structure type	分体式 Split

液氢泵 Liquid hydrogen pump



产品介绍 / Product Introduction

液氢泵采用的是往复柱塞式的，通过电缸提供动力，实现液氢的增压。此款泵用于直接加注液氢使用。

our liquid hydrogen pump is a reciprocating piston type, powered by an electric cylinder to achieve the pressurization of liquid hydrogen. This pump is used for directly filling liquid hydrogen.

产品特点 / Product Features

- A. 浸式设计，漏热率低；
 - B. 容积效率高，可达90%以上。
- A. Immersion-cooled design, low heat leakage rate.
B. High volumetric efficiency, up to 90% or more.

技术参数 / Technical Parameters

序号 SN	名称 Name	参数 Date
1	额定流量 Rated flow	6m ³ /h
2	额定排出压力 Rated outlet Pressure	2MPa
3	作用数 Number of effects	2
4	缸体数量 Number of Cylinder	单缸 single
5	电机功率 Motor power	11kW
6	结构形式 Structure type	潜液、往复式 Submersible



氢气压缩机

Hydrogen Gas Compressor



技术参数 / Technical Parameters



产品介绍 / Product Introduction

氢气压缩机主要应用于加氢站，负责将低压氢气增压到一定压力后储存在加氢站储氢容器中或直接向车载气瓶充装，满足客户氢气加注需求。

Hydrogen gas compressor is mainly used in hydrogenation station, which functions to pressurize low-pressure hydrogen to a required pressure and store it in hydrogen storage container of hydrogen refueling station or directly filling the vehicle-mounted cylinder to meet customers' demand for filling hydrogen gas.

产品特点 / Product Features

- A. 特殊的结构设计和加工工艺，可有效提高使用寿命；
- B. 液压系统控制简单，故障率低；
- C. 结构简单，零部件少，维修便捷，可在30min内完成一组气缸活塞更换；
- D. 采用特殊冷却结构设计，更利于热量传导，有效冷却气缸，提高压缩机容积效率。
- E. 每一台产品出厂前使用氦气进行压力、温度、排量、泄漏等性能测试。

- A. Special structure design and processing technology, which can effectively improve the service life;
- B. The hydraulic system is characterized by simple control and low failure rate;
- C. Simple structure, few parts and convenient maintenance. A group of cylinder piston can be replaced within 30min;
- D. Special cooling structure design, which is more conducive to heat conduction and can effectively cool the cylinder and improve the volume efficiency of the compressor.
- E. Each product is tested for pressure, temperature, displacement, leakage and other performances by using helium gas before delivery.

型号 Model	LFC-D-470/30 -300/450	LFC-D-470/50 -200/450	LFC-D-940/50 -200/450	LFC-D-1410/50 -200/450	LFC-D-1880/50 -200/450
级数 Stage	2	1			
介质 Medium	H2				
额定排量 Rated output	600Nm ³ /h	470Nm ³ /h (500kg/12h)	940Nm ³ /h (1000kg/12h)	1410Nm ³ /h (1500kg/12h)	1880Nm ³ /h (2000kg/12h)
吸入压力 Inlet pressure	3MPa~30MPa	5MPa~20MPa			
进气温度 Inlet temp.	-20℃ ~ +45℃				
排气温度 Outlet temp.	≤45℃				
最大工作压力 Max working pressure	45MPa				
电机功率 power	55KW	55KW	110 kW	145 kW	180 kW
噪声 Noise	≤85dB(距离 1m)				
防爆标志 Explosion-proof	Ex d e mb IIC T4 Gb				



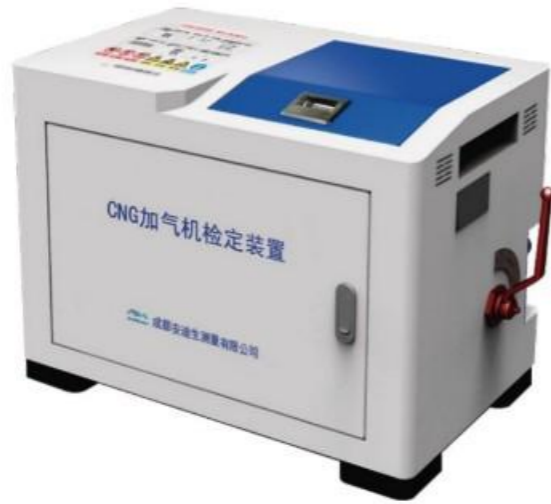
检定装置类

Calibration Device



CNG加气机检定装置

CNG Dispenser Calibration Device



产品介绍 / Product Introduction

本装置由高精度质量流量计、高精度压力变送器、10.1寸触摸屏和智能控制器等构成，可实现触摸屏离线操作或上位机在线进行CNG加气机计量准确度和重复性检测，依照检定数据打印出检定记录和计量合格证书。

This device is composed of high-precision mass flowmeter, high-precision pressure transmitter, 10.1" touch screen, and intelligent controller, etc. It can realize touch screen off-line operation or upper computer online CNG dispenser metering precision and repeatability check, and print verification record and metering certificate according to the verification data.

产品特点 / Product Features

- A. 整机全防爆
- B. 内部集成控制器，无需外接电脑，即可实现现场检定操作
- C. 触屏交互式操作与显示
- D. 当前压力实时显示（电脑软件和触摸屏）
- E. 结构紧凑，体积小，方便
- F. 可实现有线/无线传输

- A. The whole machine is explosion-proof.
- B. With a controller integrated inside, capable of achieving on-site verification without an external computer.
- C. Provided with a touch screen to achieve interactive operation and display.
- D. Real-time display of current pressure (computer software and touch screen).
- E. Compact structure, small volume, facilitating transportation and use.
- F. Wire/wireless transmissions are available.

技术参数 / Technical Parameters

流量范围 Flow-rate range	(1~70)kg/min	额定工作压力 Rated operating pressure	20 MPa
计量精度（准确度） Accuracy	0.2 级	最大工作压力 Maximum operating pressure	25MPa
重复性 Repeatability	0.1 %	输入电压 Input voltage	12V DC ~ 24V DC
环境温度 Environment temp.	-40℃ ~ +55℃	防爆标志 Explosion proof mark	Ex d e i c II B T4 Gc
尺寸规格 Overall dimension	长×宽×高: 600mm×335mm×430mm Length×Width×Height: 600mm×335mm×430mm		



LNG加气机检定装置

LNG Dispenser Calibration Device



产品介绍 / Product Introduction

由高精度的质量流量计、管路系统、安全阀、截止阀、压力表和机壳等组成；通过与加气机设备串联的方式来检测加气机的准确度和重复性，依照检定数据打印出检定记录。

It is composed of high-precision mass flowmeter, pipeline system, safety valve, globe valve, pressure gage, and enclosure, etc. Degree of accuracy and repeatability of gas dispenser is through cascading with gas dispenser. Verification record is to be printed according to verification data.

产品特点 / Product Features

- A. 电气部分采用了防爆结构，安全可靠；
- B. 采用高精度质量流量计和专用检定软件实现对LNG加气机检定；
- C. 采用图像自动识别技术捕捉LNG加气机数据。

- A. The electric part adopts explosion proof structure which is safe and reliable.
- B. It adopts high-precision mass flowmeter and special verification software to realize verification for LNG gas dispenser.
- C. It adopts image automatic identification technique to seize LNG gas dispenser data.

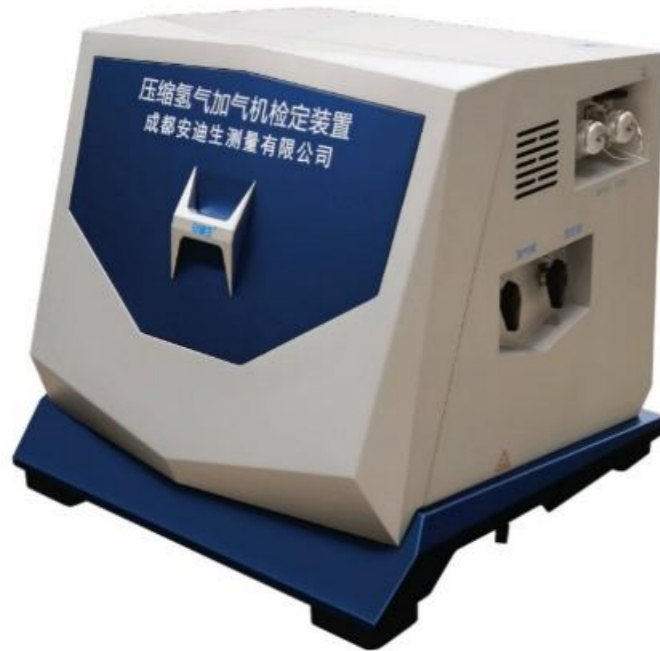
技术参数 / Technical Parameters

流量范围 Flow-rate range	(3~80)kg/min	最大允许误差 Maximum permissible error	±0.3%
计量精度（准确度） Accuracy	0.3 级	最大工作压力 Maximum operating pressure	1.6MPa
重复性 Repeatability	0.15%	输入电压 Input voltage	12V DC ~ 24V DC
环境温度 Environment temp.	-20℃ ~ +55℃	防爆标志 Explosion proof mark	Ex d e i b IIB T4 Gb
尺寸规格 Overall dimension	长×宽×高: 794mm×584mm×650mm Length×Width×Height: 794mm×584mm×650mm		



压缩氢气加气机检定装置

Compressed Hydrogen Dispenser Calibration Device



产品介绍 / Product Introduction

本装置由高精度质量流量计、高精度压力变送器
和智能控制器等构成，可实现远程操作或上位机在线
进行压缩氢气加气机计量准确度和重复性检测，依照
检定数据打印出检定记录和计量合格证书。

This device is composed of high-precision mass flowmeter, high-precision
pressure transmitter and intelligent controller, etc. It can remote operation or
upper computer online compressed hydrogen dispenser metering precision
and repeatability check, and print verification record and metering certificate
according to the verification data.

产品特点 / Product Features

- A. 整机全防爆；
- B. 内部集成控制器，可实现远程检定操作；
- C. 当前压力实时显示；
- D. 结构紧凑，体积小，方便运输和使用；
- E. 可实现有线/无线传输。

- A. The whole device is explosion-proof.
- B. Internal integrated Wireless Controller. Remote verification operation can be realized.
- C. Real-time display the current pressure.
- D. Compact structure, small volume, convenient transport and using.
- E. Wire/wireless transmissions are available.

技术参数 / Technical Parameters

流量范围 Flow-rate range	0.36~7.2kg/min	额定工作压力 Rated operating pressure	35MPa/70MPa
计量精度（准确度） Accuracy	0.5级	最大工作压力 Maximum operating pressure	43.8/87.5MPa
重复性 Repeatability	0.25%	输入电压 Input voltage	12V DC ~ 24V DC
环境温度 Environment temp.	-20℃~+55℃	防爆标志 Explosion proof mark	Ex d e Ib IIC T4 Gb
尺寸规格 Overall dimension	长×宽×高: 650mm×640mm×580mm Length×Width×Height: 650mm×640mm×580mm		



工程案例

Project Cases



- 构造核心竞争力
Construct the core competitiveness
- 实现技术价值
Realize the value of technology
- 我们能向客户提供仪表、阀门、泵、自动化仪表及系统集成、整体解决方案等。
We can provide customers with meters, valves, pumps, automatic instrument and system integration, integrated solutions, and so on.
- 应用于石油化工、新能源、冶炼行业、食品饮料、环保监测、医药、汽车制造、造纸和纸浆、深冷制造等。
Be used in Petrochemical engineering, new energy, metallurgy, food and beverage, environmental protection, pharmacy, automotive, papermaking, food, cryogenic manufacturing, etc
- 安迪生面向行业客户，提供安全、可靠、高质量的行业解决方案，帮助客户实现系统化最佳实践，以满足客户需求。
Andisoon-oriented industry, providing safe, reliable, high quality industry solutions, helping customers realize the systematization of best practices in order to meet customer demand.

LNG加气站

LNG Refueling Stations



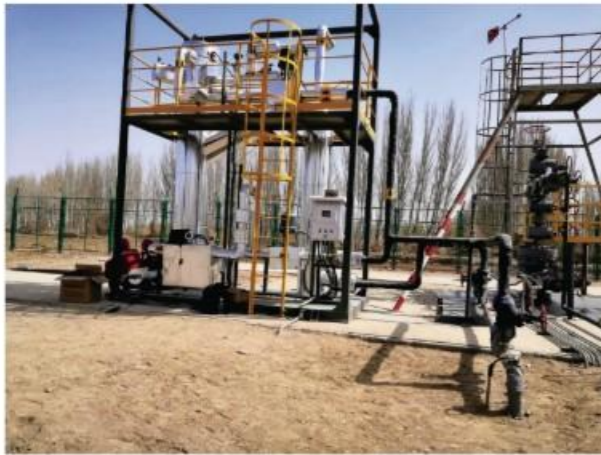
CNG加气站

CNG Refueling Stations



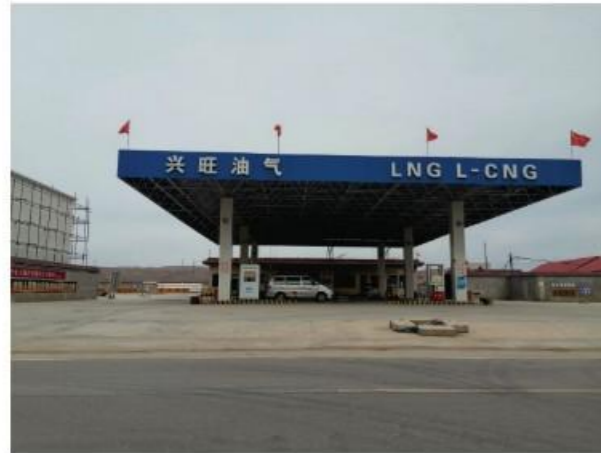
井口计量

Well Head Measurement



L-CNG加注站/LNG+L-CNG混合站

L-CNG And LNG+L-CNG Refueling Stations



加氢站

Hydrogen Refueling Stations



氢气压缩机应用案例

Application Case Of Hydrogen Compressor



合作伙伴

Cooperation Partner



安迪生不断吸取外部营养，通过积极交流合作壮大自身实力。我司十分重视对外技术合作，长期与多家国外公司以及国内多所知名高校保持良好合作关系。通过对外技术合作，使工厂的技术水平和实力得到不断提高。

Andisoon continued to draw external nutrition, expand its strength through active Exchange and cooperation. Our company attaches great importance to technical cooperation, long with a number of foreign companies as well as many domestic well-known universities to maintain good relations of cooperation. Through technical cooperation, and the technical level of the plant and technological strength has been continuously improved.

国内 China


中国石油	中国石化	厚普股份	中海油
三盈科技	海德利森	国富氢能	正星
凯德源科技	新奥控股	东照集团	中国燃气
华润集团	港华燃气	安瑞科	新捷燃气
查特	中集科技	佰焰科技 天然气加气站整体服务商	

国际 International


市场网络

Market Network


Service network

 保障售前、售中和售后全过程服务是我们的宗旨，我们不断优化企业内部管理，提升员工的服务意识，使每个安迪生的用户都能感受到我们的服务理念“体您所需、用心服务”。


Guarantee the quality of pre-sale, sale and after-sale service is our mission. We company will always continue to optimize company management to enhance the service awareness of staff. Each client can feel our service concept "What you need, that we thoughtfully service."

 公司拥有集销售、服务为一体的强大营销网络系统，有效保证公司的产品和服务都能及时地、全面地到达用户端。

We company has integrated sale and service as one marketing network system, therefore effectively guarantee the product and service can be reach the client timely and comprehensive.

 客户使用的产品发生故障，接到客户告知后1小时内做出反应，2小时内迅速做出售后服务方案，需现场服务的，技术人员及时到达现场处理，以保证所属设施、产品正常运行。

When the production malfunction, We make the after-sales service plan within 2 hours, If there need to be on-site service, the technical personnel deal with in time, in order to ensure the normal operation of affiliated facilities and products.

 销售及售后服务24小时的守候
安迪生就在您身边，竭诚为您提供最优质的服务，给客户最放心的使用保障。

Sales and after-sales service, 24 hours a day waiting for you.
Andisoon is here with you, we will do our best to provide the best service for you.

